

## A gadget for the XL flashing

To flash your XL monitor with a new F/W

you need an **LPT** (male),

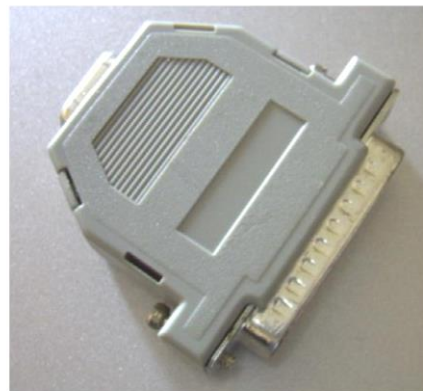
plus

D-Sub (female),

2 NPN transistors of any type (e.g. 2SC)

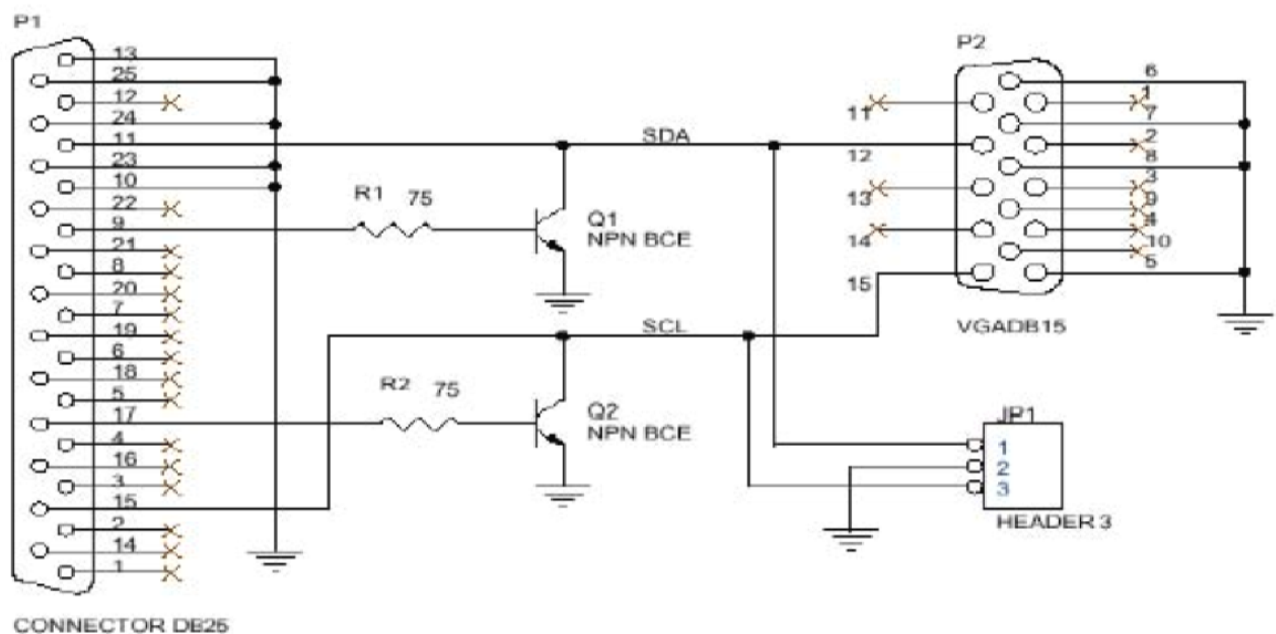
2 resistors of 75 to 100 Ohm

(all these are mounted in the LPT itself)



## The scheme

(you don't need jumper JP1)

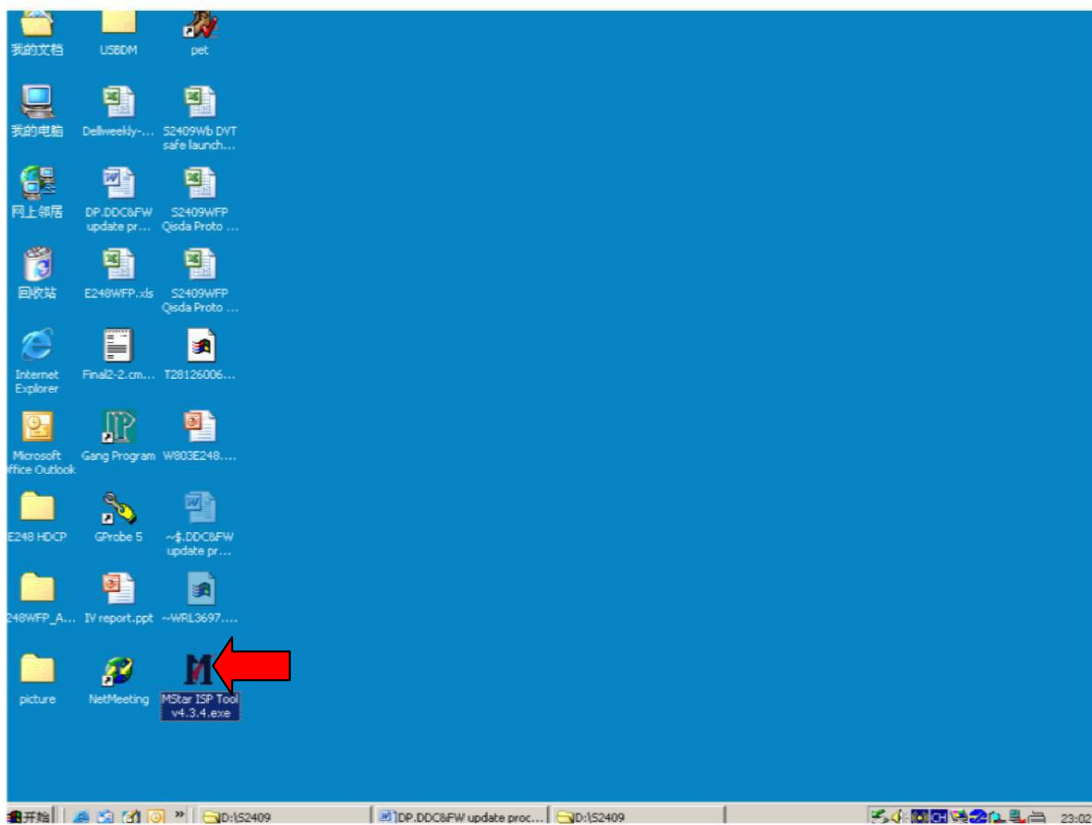


Connect the gadget to your XL using a VGA cable.

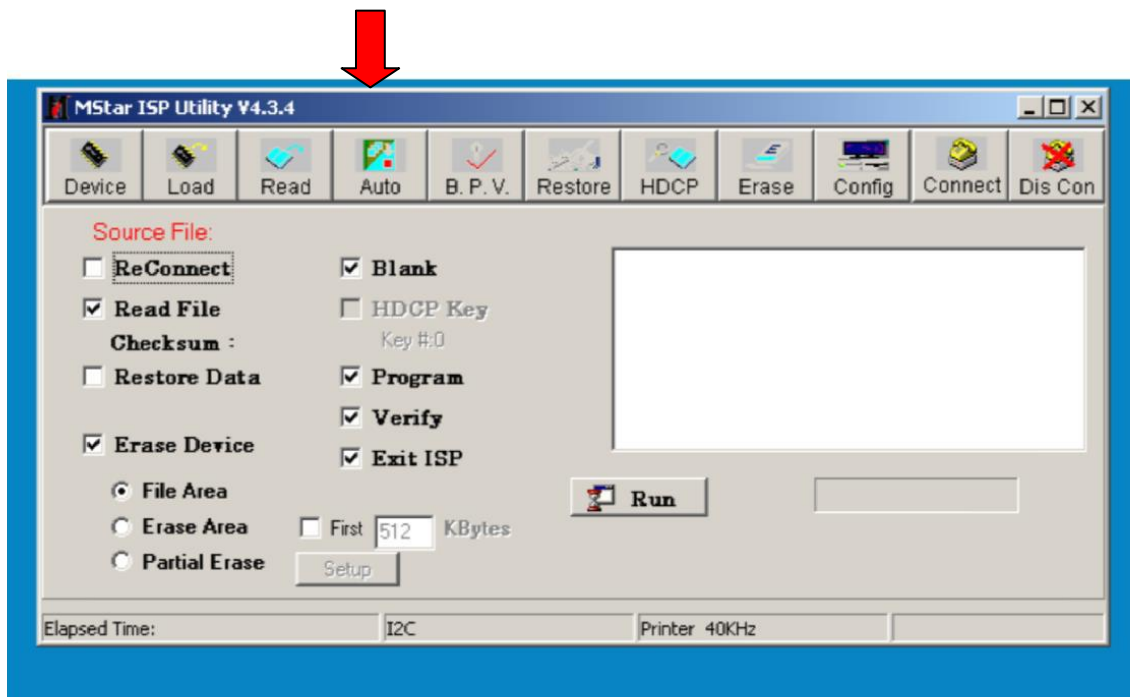
Power on the monitor into the Standby Mode



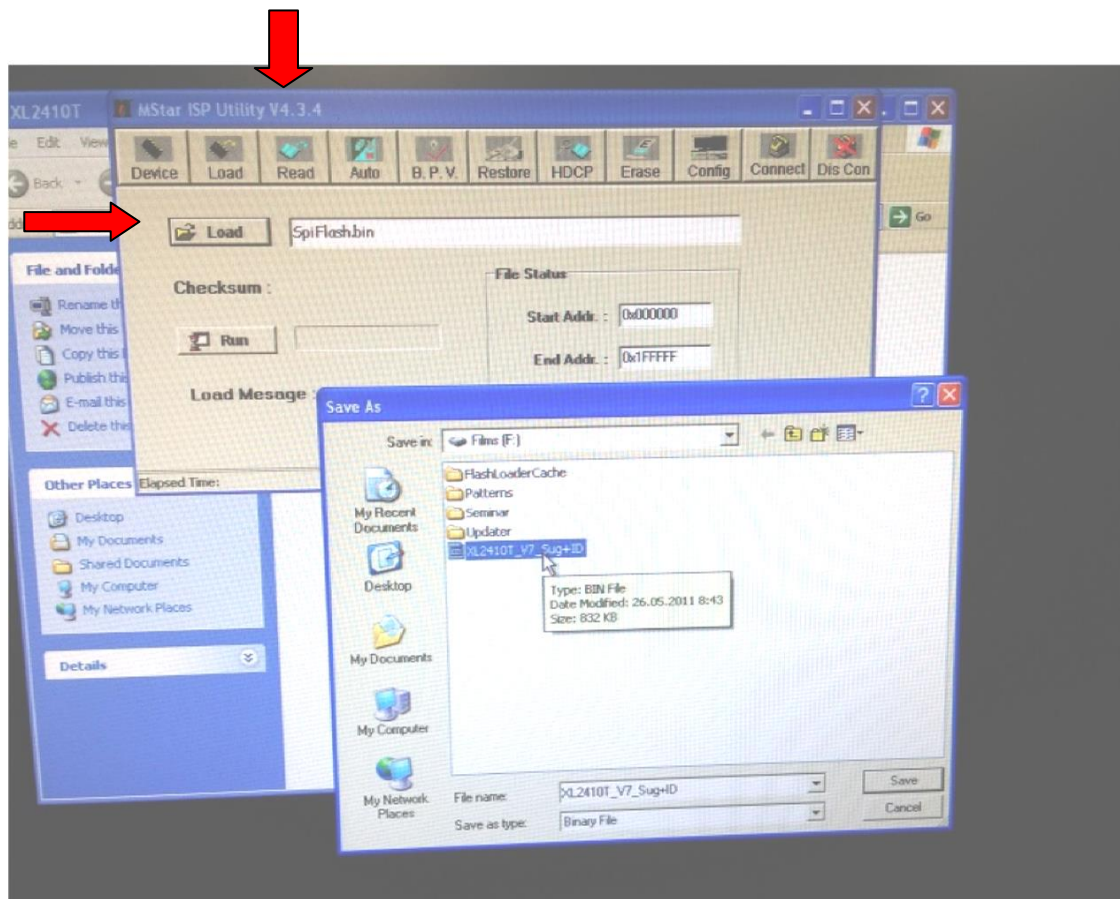
Run **MStar ISP Utility 4.3.4** (you don't need to install it)



Go to «**Auto**» and check the corresponding tick boxes

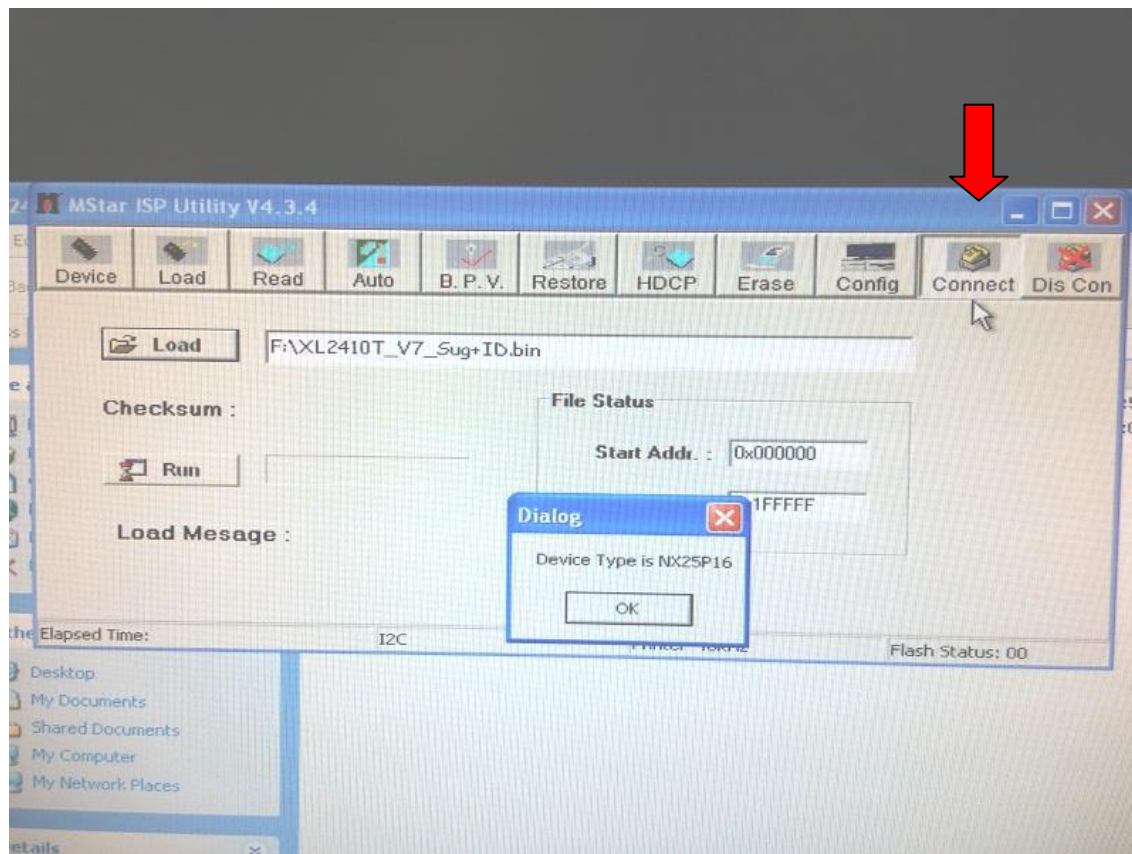


Go to «**Read**» and **Load** your F/W file .BIN

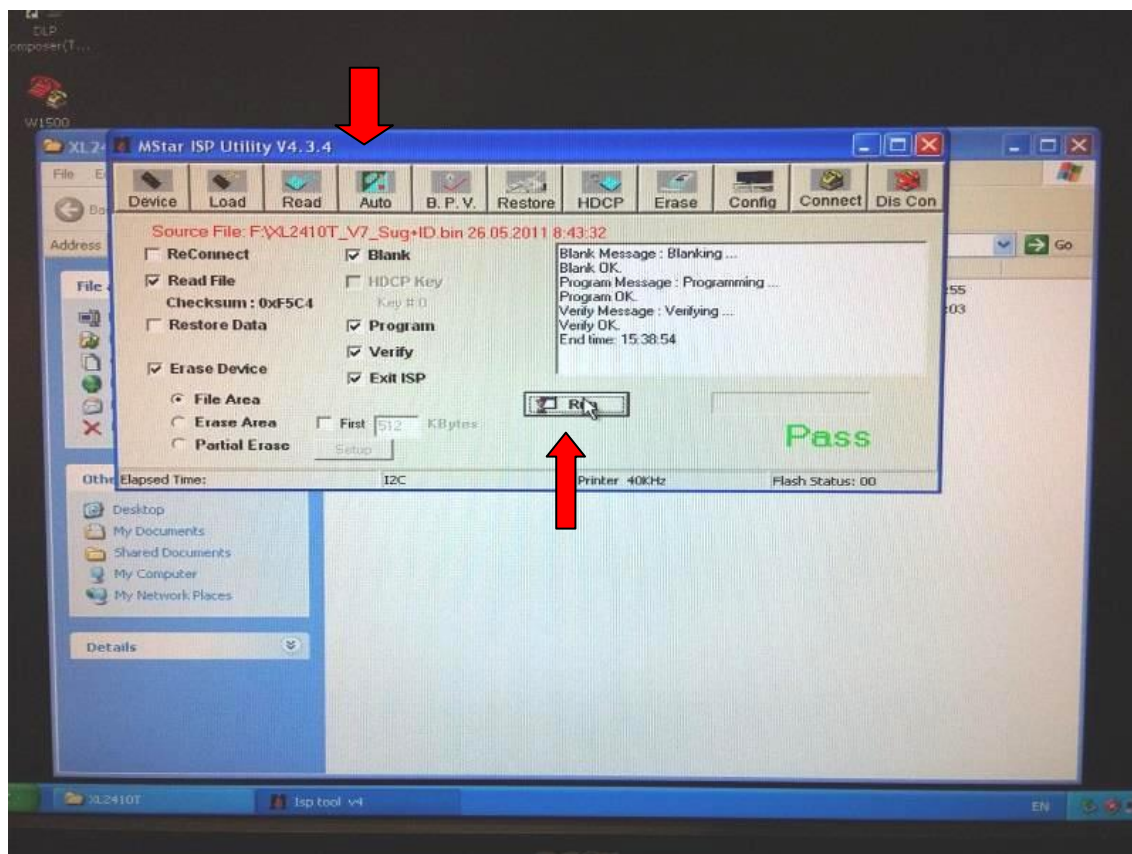




Go to «**Connect**» and — if the gadget is configured properly— you'll see the name of XL chip



Go to «**Auto**» and press «**Run**» button



After the F/W flashing monitor resets itself and goes into the Burn in Mode (the screen starts flashing with all the colours).

Turn off that Mode by pressing **Enter+Right** keys.