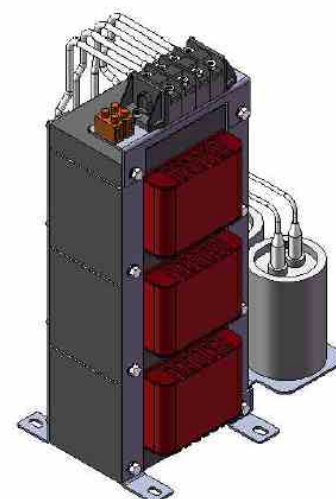


型号类别 / IDENTIFICATION

产品型号	P-No.	SKS-SHF-0010-2C5/15
产品系列号	Model family	SHF
滤波器类别	单相谐波滤波器	
Filter type	Single Phase Harmonic Filters	



技术参数 / TECHNICAL DATA

相数	No. of phase		Single Phase
额定电压	Rated voltage	[V]	230
电压范围	Voltage range	[V]	230±10%
额定频率	Rated frequency	[Hz]	50
配电线路要求	Requirements to Distribution line		According to EN 61000-2-4 Class III 符合EN 61000-2-4 Class III
额定电流	Rated current	[A]	10
适配电机功率*	Nominal motor load*	[KW]	1.5~2.2
过载能力	OVERRATING CAPACITY	[%]	150% for 60sec. once per hour. 150% 过载持续60秒, 每小时一次
THDi	THDi	[%]	15% APPRO. 15% 左右
防护等级	IP Class		IP00
耐压测试	Test voltage	[kV]	3,0

运行条件 / TECHNICAL DATA

环境温度	Ambient temperature	[°C]	-10....+40
温升等级	Class ISO °C VDE		H
冷却方式	Type of cooling		AN
风速要求	Wind speed	[m/s]	-

执行标准 / STANDARDS

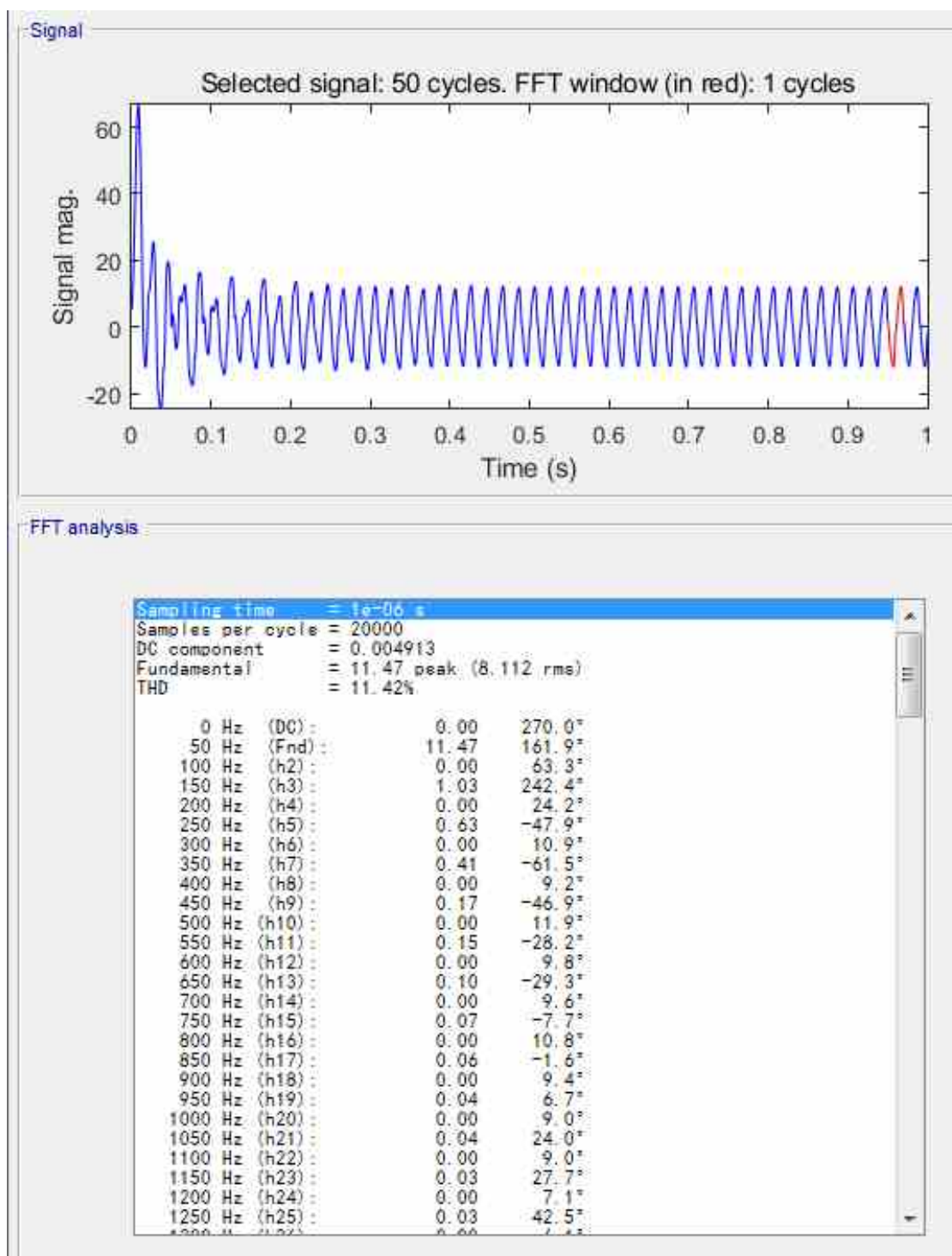
类型 / TYPE	标志 / SIGNS
EN 61 558 Teil 1	CE
EN 61 558 Teil 20	

注释 / NOTES

典型技术规格
可能因材料和生产公差而有所不同。
*= IE2 假定电机效率和逆变器效率> 95%

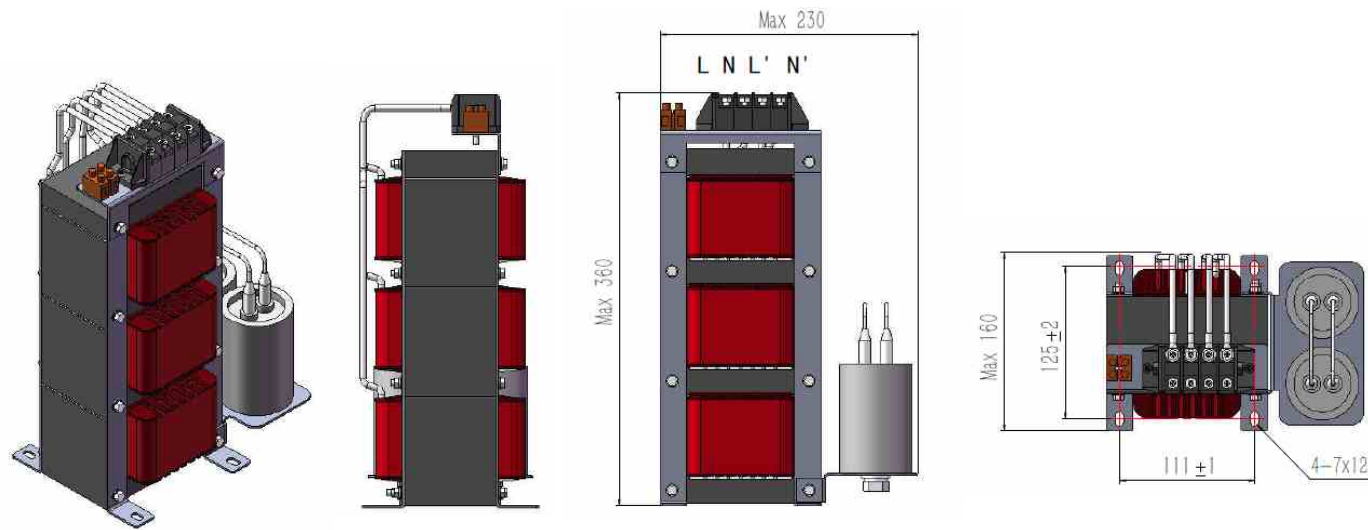
Technical specifications are typical.
They can vary due to material and production tolerances.
*=IE2 motor efficiencies and inverter efficiency >95% assumed

Typical performance of the filter @ full load



外形尺寸及安装尺寸 / Dimensions and mounting dimensions

All in mm



The dimensions is for reference only.

重量 / WEIGHT

重量	Weight	[kg]	25.0
----	--------	-------	------

连接端子 / TERMINALS

输入	Input	[L, N]
输出	Output	[L',N']

注释 / NOTES

图纸中的技术规格我司没有义务保证100%准确。
一般公差符合DIN 7168-m。
如有变更,恕不另行通知

Technical specifications in the drawing are without obligation.
General tolerance to DIN 7168-m.
Subject to change.